

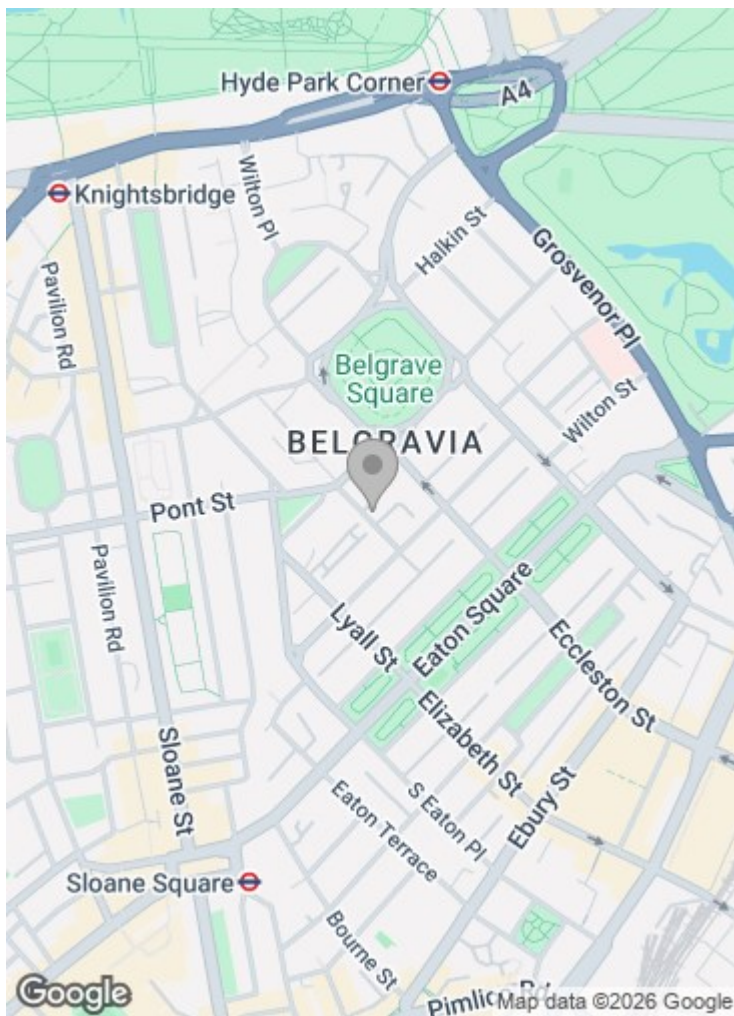


**Lowndes Place  
Belgravia SW1X 8DB**

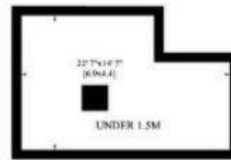
**£4,350 per week**

We are delighted to offer this stunning Belgravia family house arranged over four floors with fantastic entertaining space. The property benefits from having ample storage throughout and has been sympathetically refurbished retaining charming period features with traditional wood flooring in principal reception rooms. The house offers four bedrooms, two bathrooms, en suite bathroom, en suite shower room, guest WC, two reception rooms, dining room, cinema room/family room, kitchen, kitchenette, extremely large garage and two terraces.

Lowndes Square is a pretty residential garden square at the north-west end of Belgravia, London, SW1 close to Knightsbridge (Piccadilly line), Hyde Park (Piccadilly line), Sloane Square (District and Circle line).



**LOWNDES PLACE  
LONDON SW1**  
Gross Internal Area: 290 Sq. metres  
Including Loft 3118 Sq. feet



Important notice: These particulars are issued for guidance only. They are intended to give a fair overall description of the property and do not constitute a warranty of any kind or to be an offer or contract in whole or in part. Nothing in these particular shall be deemed to constitute a representation that the property is in good structural condition nor that any services, appliances, equipment or facilities are in good working order. Notwithstanding that all information contained in these particulars, both in the text and in any plans and photographs is given in good faith, intending purchasers should make their own enquiries as to the accuracy of all matters upon which they intend to rely. Measurements are given for guidance only.

85 - 87 BAYHAM STREET  
LONDON NW1 0AG

45 CIRCUS ROAD  
LONDON NW8 9JH

T: +44 0207 1234 152  
info@phillipsharrod.com

Energy Efficiency Rating		Environmental Impact (CO <sub>2</sub> ) Rating	
Energy Efficiency Rating: A	Environmental Impact (CO <sub>2</sub> ) Rating: A	Energy Efficiency Rating: A	Environmental Impact (CO <sub>2</sub> ) Rating: A
Energy Efficiency Rating: B	Environmental Impact (CO <sub>2</sub> ) Rating: B	Energy Efficiency Rating: B	Environmental Impact (CO <sub>2</sub> ) Rating: B
Energy Efficiency Rating: C	Environmental Impact (CO <sub>2</sub> ) Rating: C	Energy Efficiency Rating: C	Environmental Impact (CO <sub>2</sub> ) Rating: C
Energy Efficiency Rating: D	Environmental Impact (CO <sub>2</sub> ) Rating: D	Energy Efficiency Rating: D	Environmental Impact (CO <sub>2</sub> ) Rating: D
Energy Efficiency Rating: E	Environmental Impact (CO <sub>2</sub> ) Rating: E	Energy Efficiency Rating: E	Environmental Impact (CO <sub>2</sub> ) Rating: E
Energy Efficiency Rating: F	Environmental Impact (CO <sub>2</sub> ) Rating: F	Energy Efficiency Rating: F	Environmental Impact (CO <sub>2</sub> ) Rating: F
Energy Efficiency Rating: G	Environmental Impact (CO <sub>2</sub> ) Rating: G	Energy Efficiency Rating: G	Environmental Impact (CO <sub>2</sub> ) Rating: G